



An Altra Industrial Motion Company



# Genuine Parts



Your guarantee for:

# 100%

- ✓ Service
- ✓ Safety
- ✓ Reliability

Only Wichita Clutch supply **GENUINE** Wichita parts.  
Ask for the **ORIGINAL** manufacturer.



[www.wichitaclutch.co.uk](http://www.wichitaclutch.co.uk)

Tel: +44 (0) 1234 350 311  
Email: [clutch@wichita.co.uk](mailto:clutch@wichita.co.uk)

**QuickServe Fax Line**  
+44 (0) 1234 324 304

**QuickServe Tel Line**  
+44 (0) 1234 324 306

**QuickServe Email**  
[quickservice@wichita.co.uk](mailto:quickservice@wichita.co.uk)

# Products

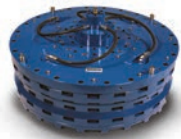
[www.wichitaclutch.co.uk](http://www.wichitaclutch.co.uk)

Wichita Clutches and Brakes provide high speed acceleration and deceleration that are essential in today's process equipment. They are available in a wide variety of designs and mounting configurations and are used extensively around the world by leading OEM's in metalworking, steel, pulp/paper, material handling, paper converting, mining, and energy.



### Modevo Air-Cooled Tension Brakes by Wichita Clutch

Modevo brakes provide smooth control at line speeds in excess of 2,000 ft./min. These bi-directional brakes have a high heat dissipation capacity (2.8 - 5 Kw). Torque capacity from 659 lb.ft. to 3,181 lb.ft.



### Marine Low Inertia Clutch by Wichita Clutch

The Wichita Air-Tube Disc Clutch combines all the best features of the disc type clutch with all the advantages of the direct air engagement. The simplest and most trouble-free method of applying air pressure is through direct axial pressure application by compressed air in a special composition full-circle tube.



### Mistral Air-Cooled Tension Brakes by Wichita Clutch

Specifically designed to meet the demanding tensioning requirements of the corrugated industry, Mistral brakes provide consistent tension control and faster line speeds (up to 1480 ft./min.). Torque range exceeding 15,900 in.lbs.



### CAB Brakes by Wichita Clutch

The Wichita CAB Copper Alloy Brakes are pneumatically actuated water cooled brakes designed for use in constantly slipping applications. CAB brakes have a high power dissipation capacity within a reduced envelope size due to their advanced design.



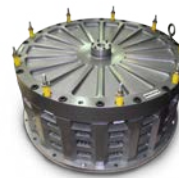
### Kopper Kool Clutches & Brakes by Wichita Clutch

These units represent the ultimate design for very high heat dissipation in the most rugged tensioning applications including drawworks. Air actuated and water cooled Kopper Kool models feature a copper disc design.



### Standard Ventilated Clutches by Wichita Clutch

All Wichita Marine Clutch units are custom built to satisfy marine classification society requirements. The Wichita Standard Ventilated Clutch is usually used in combination with recognized flexible couplings to provide reliable in-line power transmission.



### High Torque Clutches by Wichita Clutch

Wichita High Torque Clutches provide the highest torque to size ratios of any Wichita Clutch. They provide smooth controlled starts and stops and are designed for minimum power loss due to low rotating inertia.



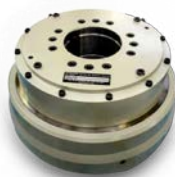
### Marine Standard Ventilated Clutch by Wichita Clutch

All Wichita Marine Clutch units are custom built to satisfy marine classification society requirements. The Wichita Standard Ventilated Clutch is usually used in combination with recognized flexible couplings to provide reliable in-line power transmission.



### Spring Set Brakes by Wichita Clutch

Wichita Spring-Set Air Release Motor Brakes are ideal for failsafe protection of process equipment. Available in foot mounted and C-face options, this improved design has thicker friction discs for longer wear life.



### Hydraulic Clutches/Brakes by Wichita Clutch

The Model HC or HCD clutches are designed to be used in either an end of shaft or through shaft mounting configuration. Their compact size makes these units ideal for incorporating within a gear housing.



### AquaMaKs Brakes by Wichita Clutch

Air, hydraulic, or spring set actuated and water cooled design, featuring copper wear plates optimized for heavy-duty continuous slip tension applications. AquaMaKs™ consist of a series of alternating friction discs and water jackets. Torque is transmitted by applying axial force from the pneumatic, hydraulic, or spring set actuator. Copper wear plates are used for excellent heat dissipation.



### Twiflex Limited

Amphill Road, Bedford MK42 9RD, UK  
Tel: +44 (0) 1234 350311  
Fax: +44 (0) 1234 350317  
Email: [clutch@wichita.co.uk](mailto:clutch@wichita.co.uk)